



# GMT MONTHLY MEMBERSHIP PROGRESS REPORT

Results as of: 5/31/2019

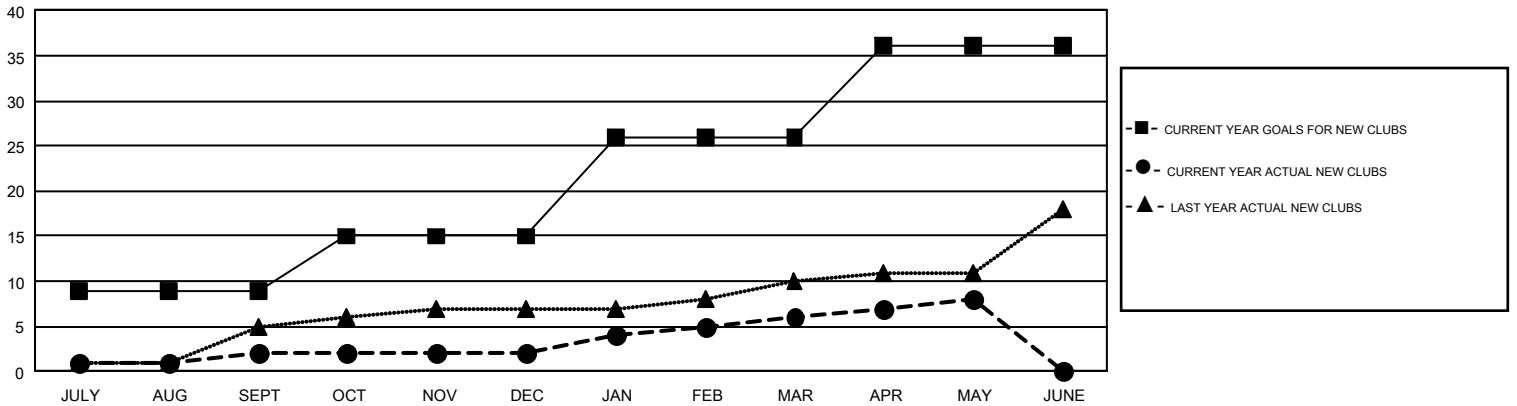
## GMT Constitutional Area 1, Group B

GMT: CINDY GREGG

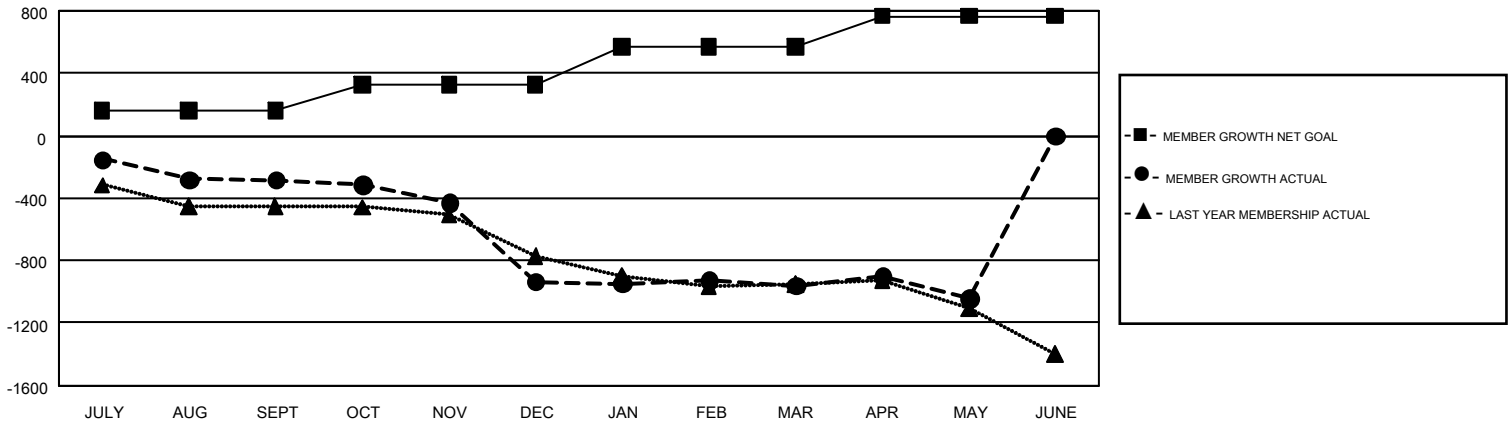
REPORT DOES NOT INCLUDE CLUBS IN UNDISTRICTED AREAS.

Clubs				Members			
RESULTS FOR 2018-2019				RESULTS FOR 2018-2019			
QUARTER	NEW CLUB GOAL	NEW CLUBS	DROPPED CLUBS	QUARTER	MEMBER GROWTH NET GOAL	MEMBER GROWTH ACTUAL	DROPPED MEMBERS ACTUAL (including transfers)
JULY/AUG/SEPT	9	2	13	JULY/AUG/SEPT	163	675	859
OCT/NOV/DEC	6	0	11	OCT/NOV/DEC	167	743	1,327
JAN/FEB/MAR	11	4	9	JAN/FEB/MAR	238	943	873
APR/MAY/JUNE	10	2	0	APR/MAY/JUNE	198	609	655

GOALS AND ACTUAL NEW CLUBS CUMULATIVE



GOALS AND ACTUAL MEMBERS CUMULATIVE



DROPPED CLUBS: 33	858 CLUBS OF 1,539 ADDED 1 OR MORE NEW MEMBERS	<u>GENDER DISTRIBUTION</u>
<u>DROPPED MEMBERS</u>	<a href="#">CLICK HERE FOR CUMULATIVE MEMBERSHIP DATA</a>	MALE            28,534 (70.87%)
DECEASED                            678		FEMALE            11,731 (29.13%)
CLUB CANCELLED                    162		TOTAL FAMILY UNIT MEMBERS                            7,951
OTHER                                    2,874		FAMILY MEMBERS PAYING HALF DUES                            4,075
TOTAL                                    3,714		